

**CHEFFINS**



**CHEFFINS AUTOMOBILIA AUCTION**  
**SATURDAY 13TH JUNE 2026 AT 9.00AM**

# CHEFFINS

## 2026 Auction Dates

Entries now being accepted for all auctions

### **Automobilia & Advertising**

21st November 2026

### **Cambridge Vintage Auctions**

24th/25th April 2026

17th/18th July 2026

16th/17th October 2026

### **Harrogate Vintage Auction**

15th August 2026

# CHEFFINS

## **Cheffins Automobilia & Advertising Auction**

**For Sale by Auction**

**Sale day: Saturday 13th June 2026 from 9.00am**  
**Viewing day: Friday 12th June 2026 from 10.00am – 5.00pm**

**Cheffins Machinery Saleground  
Sutton  
Ely  
Cambridgeshire  
CB6 2QT**

**Catalogue £5 (£8 by post)**

**Cheffins**  
Machinery Saleground  
Sutton, Ely  
Cambridgeshire  
CB6 2QT  
[www.cheffins.co.uk](http://www.cheffins.co.uk)  
[vintage@cheffins.co.uk](mailto:vintage@cheffins.co.uk)  
Tel: 01353 777767



## **ONSITE AUCTION SALE**

**FOREWORD** Forming part of Conditions of Sale.

### **Cheffins Automobilia & Advertising Auction**

**Sale day:** Saturday 13th June 2026 from 9.00am

**Viewing day:** Friday 12th June 2026 from 10.00am – 5.00pm

### **LOCATION AND DIRECTIONS TO THE SALE**

**Address:** Cheffins Machinery Saleground, Sutton, Cambridgeshire, CB6 2QT

**Postcode:** CB6 2QT

**what3words:** ///access.counters.skid

**CAR PARKING** The regular public car park will be open.

**VIEWING** The sale may ONLY be viewed on Friday 12th June from 10.00am – 5.00pm and the morning of the sale from 8.00am.

## VALUE ADDED TAX

Items in this sale sold subject to VAT are marked with a 'v' before the lot number.

- (i) Overseas purchasers from EC countries will be required to supply the Auctioneers with their VAT/FISCAL NUMBER (WHICH WILL BE VERIFIED WITH UK CUSTOMS AND EXCISE) AND OTHER RELEVANT INFORMATION AS REQUESTED so that the items may be invoiced at zero rates for VAT purposes. HOWEVER, YOU WILL BE REQUESTED TO PAY A VAT DEPOSIT EQUIVALENT TO THE STANDARD RATE OF UK VAT ON ALL LOTS SUBJECT TO VAT ON THE PURCHASE PRICE as stated in the catalogue and addendum marked with a 'v' and/or stated at the time of bidding. THE GOODS MUST BE SENT OR TRANSPORTED OUT OF THE UK TO A DESTINATION IN ANOTHER EC MEMBER STATE. It is the responsibility of overseas purchasers from EC Countries to ensure that they or their haulier complete and sign a CMR DOCUMENT AND COLLECTION CERTIFICATE on collection of the goods purchased and that the signed CMR is returned to the auctioneers' office following delivery of the goods. The original collection certificate must be left with the Auctioneers. Upon the above requirements being met in full, a refund of the VAT deposit will be made to the purchaser. Failure to do so will result in the VAT deposit being paid over to Customs & Excise as VAT. (See note 7.2 Conditions of Business, Information for Buyers).
- (ii) In the case of overseas purchasers from Non-EC Countries, they will be required to pay a VAT deposit equivalent to the standard UK rate. Such amount will be refunded to the overseas purchaser if the Auctioneers receive, within three months of the time of supply, Customs Entry Advice Notes and a Bill of Lading or Certificate of Shipment as proof of shipment clearly identifying the goods which have been exported outside the EC, failing which the VAT deposit will be paid over to Customs & Excise as VAT. (See note 7.3 Conditions of Business, Information for Buyers).

**Items in the sale sold under the 'margin scheme' are marked with an 'm' before the lot number, see conditions of business, paragraph 7.1.**

**Items in the sale that are 'zero rated' or 'exempt are marked with a 'z' before the lot number, see conditions of business, paragraph 7.1**

**OVERSEAS PURCHASERS** to note our Standard Terms and Conditions, see Section 7.2.

**Please note ALL overseas purchasers will be required to pay a VAT deposit.**

**BUYER'S PREMIUM** A buyer's premium of **15% + VAT** will be added to the hammer price at the following rates:

**Please note there is a minimum buyer's premium charge of £2.50 plus VAT per lot.**

**AUCTION CONDITIONS** The attention of Purchasers is drawn to the Conditions of Sale included in the catalogue.

**TO BID ONLINE** You must register on [cheffins.co.uk](http://cheffins.co.uk) and sign up for the separate auctions you wish to bid on. Cheffins reserve the right to refuse any registrant from bidding.

## **SOLD AS SEEN STATEMENT**

Cheffins often relies on information that is provided by the Vendor (Seller) as to the age, condition and extent of documentation of Vehicles and other Lots. In those cases, Cheffins does not provide its own photographs or catalogue description and cannot undertake any inspection of those Lots.

It is the responsibility of the prospective buyer to ensure that the Lot conforms with the supplied description.

Cheffins politely remind you that all Lots are subject to our standard Terms & Conditions therefore viewing the Lot prior to bidding is strongly recommended.

**METHOD OF PAYMENT** All lots must be paid for on the day of sale.

Purchasers unknown to the Auctioneers and wishing to pay by cheque must make one of the following arrangements BEFORE the day of sale. **PLEASE NOTE, WE NO LONGER ACCEPT CASH OR CREDIT CARDS FOR ANY TRANSACTION.**

1. Inform your own Bank Manager that you wish to pay by cheque, tell him the maximum amount you are likely to spend and ask him to instruct our Bankers that it will be in order to accept your cheque. Our Bankers will then inform us. Our Bank is **Barclays Bank plc, St Andrews Street, Cambridge**. Please specify date and location of sale.
2. Arrange with your Bank Manager for the issue of a guaranteed cheque to be brought with you.
3. Provide a letter from your bank stating the amount up to which your cheque will be honoured. Fax copies and photocopies are NOT acceptable, and the letter must specify the sale and date.
4. Buyers wishing to pay by direct bank transfer or Overseas payments should be made by Inter Bank transfer using SWIFT to Barclays Bank, Cambridge **Sort Code 20 17 68 Account Name Cheffins Account No. 50237698 IBAN No. GB43 BARC 2017 6850 2376 98 Swift Code BARC GB 22**. Please quote your name and invoice number when making a payment.
5. Payment can be made by Visa/Delta Debit Cards, Switch/Maestro and Mastercard Debit. **Please note, that we NO LONGER ACCEPT Credit Card payments for any transaction.**

**HOURS/MILEAGE** The figures stated in the catalogue are believed to be correct at the time of cataloguing. Purchasers should satisfy themselves with the correctness of the hours/mileage.

**NO LOTS MAY BE TRANSFERRED** The Auctioneer will only accept payment from and permit removal of lots purchased by the Purchasers successfully bidding at the sale or his Agents.

**REMOVAL OF LOTS** All lots must be paid for on the day of sale and all lots without exception must be removed by no later than Friday 19th June. There will be no mechanical loading at this sale. **Beyond this please contact the auctioneers on 01353 77767 opt. 2 to arrange collection.**

**RISK** The Bidder is at risk once the hammer falls and is strongly advised to effect insurance at once. **All lots are sold strictly as seen and without warranty, purchasers are urged to satisfy themselves prior to the sale as to the condition of each lot and whether the lot accords with its description.**

**ENQUIRIES** The Auctioneers may be contacted on the following numbers:

Tom Godsmark	07538376363	
Ted Shepherd	07775 866166	
Oliver Godfrey	07748 596062	
Charles Wadsley	07570 649189	
Bill King	07831 732617	
Sophie Ashton (accounts)	01353 777767	opt. 4
Office	01353 777767	opt. 2

**PHOTOGRAPHS** of all lots can be viewed on our website [www.cheffins.co.uk](http://www.cheffins.co.uk)

**Please note that this catalogue is subject to change and salegoers are urged to refer to the Cheffins website for an up-to-date lot list before attending the sale.**

**SALE TO COMMENCE AT 9.00AM**

Lots that are marked with a `v` are subject to VAT, unless otherwise stated at the time of sale.  
Lots that are marked with an `m` are sold under the margin scheme (no VAT).  
Lots that are marked with a `z` are VAT exempt.  
Please refer to foreword re: Buyer's Premium, VAT, Lot Collection and Method of Payment.



**m1** Park Drive Plain & Corked Tipped cigarettes single-sided enamel advertising sign, 36x24ins



**m4** Michelin pictorial printed tin shield shaped advertising sign, c.30x25.5ins



**m2** Castrol Service printed aluminium advertising sign, 36x24ins



**m5** Michelin printed tin road map sign of The British Isles advertising sign, late 1970s, c.32.5x28.5



**m3** Goodyear Tyres diamond shape single-sided enamel advertising sign, 36x19ins



**m6** Michelin printed tin road map sign of England & Wales, dated 1975, c.34x25ins

*All lots are sold strictly as seen and without warranty, potential purchasers must satisfy themselves as to the true condition of a lot by personal inspection prior to the sale.*



**m7** Michelin Pressures for Car Tyres printed tin chart sign, dated 1968, c.29x12ins



**m8** CarPlan Brushing Colour Service printed tin advertising sign, 38x9ins



**m9** Petroleum Spirit Highly Inflammable No Smoking Switch Off Engine Thank You cast aluminium sign, 14x10ins



**m10** Motor Agents Association The Sign Of Service Member printed aluminium advertising sign, 24x18ins

**m11** India Tyres Tyre Service double-sided aluminium sign, severe losses, 24x18ins

**m12** Free Holiday Insurance Here! Double sided hardboard sign, c.30x30ins



**m13** Lucas Genuine Spares freestanding embossed card advertising sign, 17x11ins



**m14** We Operate The Lucas B90 Exchange Service embossed card advertising sign, 17x9ins, t/w Lucas B90 box

All lots are sold strictly as seen and without warranty, potential purchasers must satisfy themselves as to the true condition of a lot by personal inspection prior to the sale.



**m15** Crypton Dyna-Vision Electronic Engine Tune Up workshop banner, c.90x17.5ins



**m18** Exide Batteries For Service single-sided plastic hanging advertising sign, 19x16ins



**m16** Exide The Battery With The Chloride Pedigree The people who provide motive power for Britain's Milk Delivery Vehicles hardboard advertising sign, c.19.5x19ins



**m19** Circular Open/Closed swinging acrylic sign, 15ins dia'



**m17** You Can Bank on Exide hardboard advertising sign, 23.5x15ins



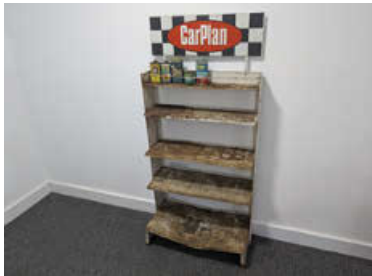
**m20** BP Regular square-shape glass petrol pump globe by Hailware, marked property of Shell-Mex & BP Ltd, direct from a Little Downham filling station with remains of rubber neck



**m21** BP Super square-shape glass petrol pump globe by Hailware, marked property of Shell-Mex & BP Ltd, multiple areas of damage, direct from a Little Downham filling station



**m24** Filtrate Oil mobile bottle forecourt display stand, c.35ins tall 16.5ins wide c/w 4no. Filtrate tins



**m22** CarPlan 5-tier bottle and can advertising display stand, paint losses and damage to lowest tier, c.60ins tall, 28ins wide c/w qty CarPlan tins



**m25** BP Self-Mix Two-Stroke Oil forecourt dispenser



**m26** BP Self-Mix Two-Stroke Oil forecourt dispenser with handle



**m23** Goodyear Tyres mobile rack with aluminium advertising sign c.65ins tall, 29ins wide

**m27** Duckhams Q20-50 oil bottle stand with 3 signs in place, c.29ins tall

All lots are sold strictly as seen and without warranty, potential purchasers must satisfy themselves as to the true condition of a lot by personal inspection prior to the sale.



**m28** Lucas Precision Tested Bulbs point of sale timber advertising display rack, 20ins tall, 18ins wide c/w qty NOS Lucas spares



**m32** CarPlan Spray Colour Service 4-tier advertising display stand 22.5ins tall, 25ins wide, c/w qty cans



**m29** Exide Batteries 3-tier advertising display stand, plastic and wood construction 28ins tall



**m33** Fram Filter Service advertising display stand with signs, 26ins tall, 29.5ins wide c/w qty NOS filters



**m30** Bowes Seal Fast Tube repair kit wall-mounted advertising display rack 14x10ins



**m34** Crypton D-I-Y Engine Tuning kit mounted to rotating display stand, incomplete, 20ins tall t/w Crypton Driving gauge in original tube holder

**m31** Lodge World Famous Quality Spark Plug advertising clock, plastic, severe damage, 17.5x9.5ins

All lots are sold strictly as seen and without warranty, potential purchasers must satisfy themselves as to the true condition of a lot by personal inspection prior to the sale.



**m35** AC Pressure Cap & Cooling System Tester advertising wall mounted display rack with signs, 15x15ins

**m36** Remax & Romac wall mounted workshop advertising display racks



**m37** Rony Flex Radiator Hoses wall-mounted advertising display rack, 23ins wide



**m38** Castrol Lubrication charts mounted on wall mounted display holder t/w other Castrol charts

**m39** Large qty BP Energol lubrication charts, t/w Fina charts and Michelin wall hanging charts

**m40** Qty workshop wall-mounted dispensing units and signs

**m41** Champion spark plug cleaning machine mounted on timber board



**m42** Hepolite Pistons Pins Rings Liners For All Engines counter-top service manual holder, manual has damp damage



**m43** Filtrate oil barrel pump, NOS in original box

**m44** Redex Compression Tester t/w remains of forecourt dispenser

**m45** Qty workshop dispensers to inc. BP Energol Upper Cylinder Lubricant etc

All lots are sold strictly as seen and without warranty, potential purchasers must satisfy themselves as to the true condition of a lot by personal inspection prior to the sale.



**mm46** Lucas Cables dispenser unit top with two printed signs

**m47** Open for Super V Visco-Static canvas sign

**m48** Spafax workshop organiser tins in stacking box

**m49** 2no. Castrol reel line dispenser front panels



**m50** Castrol Surecoat Rust Preventive Fluid One Gallon can, an unusual survivor with paper label

**m51** Qty oil pouring jugs and tins, various sizes

**m52** 9no. Castrol SMX 1 litre oil cans, NOS with contents



**m53** Qty tins and cans to inc. Romac, Castrol, Holts etc

**m54** Qty tins and cans to inc. Hermetite, BMC touch up paint etc



**m55** Qty tins and cans to inc. Holts, Simoniz, Girling etc



**m56** Uveco Poultry single-sided enamel advertising sign, 24x12ins

*All lots are sold strictly as seen and without warranty, potential purchasers must satisfy themselves as to the true condition of a lot by personal inspection prior to the sale.*



**m57** Qty motoring themed games to inc. Touring England, Auto-Go, Glico playing cards etc



**m60** Rawlplug, a pictorial cutout point of sale countertop cardboard advertising sign, c12ins tall



**m58** John Bull snuff tin t/w Power Petrol invoices, Shell & Esso tissues etc



**m61** Marx Toys, American Made, tinplate garage forecourt battery powered toy set, with model petrol pumps 'Motor Gas' and 'Ethyl Gas' and forecourt oil cabinet, 9.5 x 6.5ins



**m59** Castrollo, a recreated wall mounted oil jar dispensing cabinet c/w oil jars, pourers and recreated stickers



**m62** Trojano, The Great Motor Touring Game by Chad Valley c/w some contents

All lots are sold strictly as seen and without warranty, potential purchasers must satisfy themselves as to the true condition of a lot by personal inspection prior to the sale.



**m63** Exide The First Name In Batteries pictorial double sided flanged printed tin advertising sign, 24x16.5ins



**m64** Walls Ice Cream Sold Here single sided enamel advertising sign, 24x21ins



**m65** Pr. Castrol 1quart oil bottles t/w Esso 1pint oil bottle, with reprinted sticker



**m66** Triang Transport tinplate tipper lorry toy, marked Made In England with the Lines Bros logo



**m67** Triang Transport canvas top lorry toy, marked Made in England and bearing the Lines Bros logo



**m68** Triang Toys Junior Farm Lorry toy c/w full set of Triang milk bottles and original box



**m69** Weaver 110lbs wall mounted garage forecourt air meter and air line hose



**m72** Castrol, 2no. 1lb motoring grease tins to inc' Water Pump Grease and LM Grease



**m70** Qty oil and motoring cans and tins to inc' Castrol, Halfords, Shell and Sturmev Archer



**m73** BP Energrease C3 1lb grease tin t/w BP SAE 80 EP Gear Oil one pint motoring tin



**m71** Qty oil and motoring cans and tins to inc' Duckhams, Ford, Foliac and Sturmev Archer



**m74** Esso UCL hand operated grease gun t/w Esso Expee Compound 1pint motoring tin

All lots are sold strictly as seen and without warranty, potential purchasers must satisfy themselves as to the true condition of a lot by personal inspection prior to the sale.



**m75** Wakefield Castrol 1gallon motoring oil can



**m78** All Cars Going East Stop Here curved post-mounted tramway enamel sign



**m76** All Trams Inward Stop On Request, curved post-mounted tramway enamel sign



**m79** Cars Stop By Request curved post-mounted tramway enamel sign, some restoration



**m77** All Cars Inward Stop Here On Request curved post-mounted tramway enamel sign



**m80** All Cars Stop Here curved post-mounted tramway enamel sign, some restoration

*All lots are sold strictly as seen and without warranty, potential purchasers must satisfy themselves as to the true condition of a lot by personal inspection prior to the sale.*



**m81** Loitering Not Allowed  
Metropolitan Borough of Stepney  
By Order Of the Committee  
enamel warning sign c.14.5x7ins



**m82** Burn Lancashire Coal lorry-top  
mounted single-sided enamel  
advertising sign, 53.5x12ins



**m83** Jeyes' Fluid The Best Disinfectant  
Safe and Efficient freestanding  
advertising mirror, 10ins dia'



**m84** Various motoring items to inc.  
Daimler ash tray, cyclists folding  
cup, Beaulieu medal etc



**m85** Shell Motor Spirit miniature  
2gallon petrol can, c.2.5ins tall



**m86** Shell advertising promotional  
canvas flag with pecten  
graphics, c.43x29.5ins

All lots are sold strictly as seen and without warranty, potential purchasers must satisfy themselves as to the true condition of a lot by personal inspection prior to the sale.



**m87** Essolube Super-Huile Pour Autos timber delivery crate with printed tin signs both sides, French language, c.24x21x13ins



**m93** Agricastrol 5gallon conical top pictorial oil can, featuring tractors



**m88** Clarington 3 lens road works warning lamp marked Billinge & Winstanley



**m94** No Thoroughfare printed aluminium single-sided warning sign, 27x9ins

**m89** Car mascot featuring a fish, 'SIREN' cast into plinth, nickel plated



**m90** Pegasus, a nickel plated brass car mascot

**m91** Car mascot featuring a winged figure

**m92** Thelson Motor Oil 5gallon pyramid top oil can



**m95** ROP Motor Spirit 2gallon petrol can c/w brass ROP cap

*All lots are sold strictly as seen and without warranty, potential purchasers must satisfy themselves as to the true condition of a lot by personal inspection prior to the sale.*



**m96** ROP Motor Spirit 2gallon petrol can



**m97** Caution 5 M.P.H Unauthorised Persons Not Allowed On Premises circular single-sided motoring warning sign, 18ins dia'



**m98** S.Cyril Av double-sided road street sign, American, c.27x8.5ins inc. bracket



**m99** The Battery Cycle Works catalogue t/w Dunlop cycles advertising card

**m100** Forecourt cabinet oil can, an unusual short version, no makers mark

**m101** 2gallon petrol can, an apprentices work piece in copper



**m102** Metropolitan Vickers G Oil Apiezon pyramid top can, c.1gallon with cap



**m103** Petrol Oil pump t/w paraffin pouring can

*All lots are sold strictly as seen and without warranty, potential purchasers must satisfy themselves as to the true condition of a lot by personal inspection prior to the sale.*



**m104** Goodyear Tyres double-sided enamel advertising sign, flange missing, 34x21.5ins

**m105** Goodyear Tyres double-sided enamel advertising sign, flange missing, 34x21.5ins



**m106** Berkshire County Council Water Level Indicated On Posts Is Depth At Centre of Ford cast aluminium road sign c/w part sign post, some restoration, 48ins tall including post

**m107** Room For One Pictorial Royal Doulton veteran motoring themed decorative plate, c.10.5ins dia.



**m108** Shell, Castrol, Cleveland Discol, 3no. promotional cap and lapel badges



**m109** Pr. Shell promotional fuel/oil cap badges



**m110** National Benzole Co. Ltd DERV glass petrol pump insert t/w Our National Heritage fuel company book

**m111** Grappler Tyres promotional advertising bicycle pump, Made By The Cycle Components Manufacturing Company Ltd



**m112** Power, an underground fuel tank brass cap, marked property of Power Petroleum Company Ltd

**m113** Shell embossed early brass oil drum tap, mounted on timber



**m114** Castrol Motor Oil pint pourer



**m115** Mobiloil Mobilgrease MP t/w Challenger Moro Grease 11lb tins



**m116** Baco Motor Products Shock Absorber quart & Zeroic Compressor Oil quart oil cans



**m117** Shell Motor Spirit miniature can in the style of a 2gallon petrol can to suit pedal cars



**m118** BP Super Plus, Derv, Diesolite, 3no. petrol pump enamel advertising tags



**m119** Vauxhall single-sided hanging dealership advertising sign, gold leaf on glass 18x12ins

**m120** Thornycroft X & J Types Lorry Instructions to Drivers single-sided enamel sign, c.1910, marked Wood & Penfold London, 16x11ins



**m121** Shell-Mex & BP Ltd Dorchester Depot single-sided enamel advertising sign, 36x17ins



**m122** Greyhound Royal Blue Services Book Here Luxurious Motor Coaches Maintained Daily Through The South & West of England pictorial enamel bus advertising sign, 41x20ins, some restoration

**m123** Scratch-built steel children's pedal car with solid rubber tyres

**m124** Strictly Private No Entry Except to Authorised Persons cast brass sign, 14x7ins



**m125** Kirloskar Sales and Service Engines & Spares single sided enamel advertising sign, marked Property Kirloskar Engines Ltd, 24x18ins



**m126** Private Land No Parking Trespassers May Be Liable to Prosecution enamel warning sign



**m127** Shell Lensbury Headquarters original enamel grille badge



**m128** The Boons & Blessings double-sided enamel advertising sign by Burnham Depts with hanging flange 12x10ins



**m131** Post Office cast iron post-top advertising directional sign 19x6ins



**m129** Public Telephone single-sided enamel sign, 33x12ins



**m132** Van Houten's Cocoa single-sided advertising enamel sign, 30x30ins



**m130** London City Council Danger This Ice is Dangerous warning sign, paper on board, dated 1958, framed, 23.5x20ins



**m133** Southdown Coach Stop post-mounted enamel sign with brackets, 14.5x9.5ins

*All lots are sold strictly as seen and without warranty, potential purchasers must satisfy themselves as to the true condition of a lot by personal inspection prior to the sale.*



**m134** Stalls, gold leaf on glass advertising ex-theatre hanging sign



**m138** Electro Mechanical Pinball Machines advertising card single-sided sign c.28.5x16.5ins



**m135** TELEPHONE glass sign to suit red telephone box, 25x4ins



**m139** Falcon Brewery Okells Ales acrylic advertising sign, 12x10ins



**m136** Get a Ronson Here The Perfect Gift For All Occasions cigar and cigarette lighter single-sided illuminated light box hanging advertising sign 43.5x13ins



**m140** Pierce Duff's Table Specialities 1957 card advertising wall hanging calendar complete with all paper tear-offs, c.14x9ins



**m137** Drink Coca-Cola Ice Cold promotional cool box

All lots are sold strictly as seen and without warranty, potential purchasers must satisfy themselves as to the true condition of a lot by personal inspection prior to the sale.



**m141** Watson's Rumbuttas pictorial confectionary tin, 9.5ins tall



**m142** Nurse Grants Clear Mints pictorial sweet tin, c.11ins tall



**m143** Always Use Cupiss Trade Mark Constitution Balls for Horses, Cattle and Sheep, a highly pictorial advertising poster from Diss, Norfolk, artwork by E.Hacker, framed and glazed, 41x30.5ins



**m144** S Corbett & Sons, Wellington, Salop, The Worlds Best Grinding Mills, a highly pictorial and colour agricultural advertising showcard by Grant & Co Ltd, Turnmill St, London, No.5522, framed and glazed, 27x21.5ins



**m145** W.W. Greener shotgun cartridges promotional Italian advertising show card, framed c.23x19ins



**m146** We Sell Cupiss' Constitution Balls for Horses, Cattle & Sheep single sided card hanging advertising sign, 9.5x6.5ins



**m147** Lyons Maid Ice Cream printed pictorial aluminium advertising sign with metallic foil finish, 24x18ins



**m151** Say Solan Brewery pictorial enamel advertising sign, losses, 36x24ins



**m148** Hywel Crescent single-sided enamel street sign, c.48.5x7ins



**m152** Country Life Smoking Mixture enamel advertising sign, marked Stainton & Hulme Ltd, 40x30ins



**m149** Pyruma The Putty Fire Cement pictorial enamel advertising sign, 30x20ins



**m153** Durand, Sedgwick & Bird Wine Merchants, 95 High Street, Watford enamel advertising sign, marked Patent Enamel Co. 48x24ins



**m150** Wills's Star Cigarettes pictorial enamel advertising sign, some restoration, 36x18ins



**m154** Old Bill cast bronze car/lorry mascot mounted on plinth, by Bruce Bainsfather

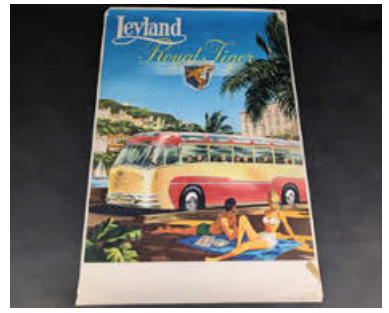
**m155** L.C.C No. 79 Filling Station aluminium sign, 39x11ins



**m156** Royal Blue Services Book Here Luxurious Motor Coaches Maintained Daily Through The South & West of England painted steel pictorial advertising sign, 41x20ins



**m157** Michelin printed tin road map of England & Wales advertising sign, some paint overspray, c.34x24.5ins



**m158** Leyland Royal Tiger pictorial colour coach poster, marked Cross-Courtenay Ltd Manchester, Print 30x20ins



**m159** Leyland Comet '90' Trucks pictorial colour lorry poster, marked Cross-Courtenay Ltd Manchester, Printed 30x20ins



**m160** See London Floodlit Birch Bros Ltd Streamline Coaches Leave Here Hourly advertising poster, marked Langley & Sons Ltd The Euston Press N.W.1 30x20ins





**m166** Michelin Bibendum man promotional advertising ash tray



**m170** Pr. Essolube 50 oil bottle cork caps



**m167** 8no. BP Energol oil bottle caps



**m171** 6no. Castrol Castrolite oil bottle caps



**m168** 9no. Shell X-100 Motor Oil bottle caps



**m172** 8no. Castrol oil bottle caps to inc. XL, XXL etc



**m169** 6no. Shell oil bottle caps



**m173** 6no. Castrol XXL oil bottle caps

All lots are sold strictly as seen and without warranty, potential purchasers must satisfy themselves as to the true condition of a lot by personal inspection prior to the sale.



**m174** Gear stick and gated gearbox desk top pen and holder set, in the style of a classic Ferrari gearbox



**m175** The Signpost Brand Lubricating Oil cycling oil can



**m176** Dominion enamel cap badge in the shape of a petrol pump globe, marked L Simpson & Co



**m177** Redline-Glico petrol enamel cap badge



**m178** Shell pecten shaped enamel cap badge



**m179** Esso enamel cap badge marked Firmin, London



**m180** BP Energol Domestic Oil 4 fluid oz can with contents

**m181** Motor Oil Certified Correct Measure Visible Filling Fuel Pumps pictorial sew on badge



**m182** 3no. Triang Minic Toys double decker bus 'push and go' models, unboxed



**m183** 3no. motorcycle tin plate clockwork models



**m184** 2no. Bugatti Type 35 style race car tin plate models



**m185** Marx tin plate lithographed clockwork tank model



**m186** Gama tin plate lithographed clockwork model military tank, tracks removed

**m187** Gama military tank, together with an Ideal field gun and another tin plate tank model

**m188** 3no. tin plate military clockwork aircraft to inc. Spitfire, USAF jet etc

**m189** 5no. tin plate model aircraft to inc. Biplanes, helicopter etc



**m190** Bus & Coach Stop Request LT London Transport double-sided enamel sign in frame, c.18x16ins



**m193** Eclipse Tools Designed with The Job In Mind folded aluminium around card hanging advertising sign c.16x8ins



**m191** Duckworth's Essences & Colours single-sided colour hanging advertising show card, appears to be unused, 17.5x14ins



**m194** It Is A Serious Offence To Remove Any Guard or Protective Device For Any Purpose... Single-sided enamel warning sign 12x12ins



**m192** Ginger Beer and Stout Home Brewed Manufactured by J.B. Bowler, Corn St Bath colour advertising show card 12x9.5ins

**m195** Danger Do Not Touch single-sided enamel warning sign 8x6ins

**m196** 1977 Cadbury's Cocoa Essence Guaranteed Absolutely Pure Cocoa pictorial tin 6x4x4ins



**m197** 1977 Cadbury's Cocoa Essence Guaranteed Absolutely Pure Cocoa pictorial tin 6x4x4ins

All lots are sold strictly as seen and without warranty, potential purchasers must satisfy themselves as to the true condition of a lot by personal inspection prior to the sale.



**m198** Fry's Chocolate boy advertising figure 'Hello Daddy! Guess What I've Got! c.7.5ins tall



**m199** Palethorpes' Royal Cambridge Sausages enamel butchers slab display tray 13x10.5ins



**m200** Ask For Hudsons Soap 'Drink Puppy Drink' enamel advertising dog bowl, c.14ins across (red background)



**m201** Ask For Hudsons Soap 'Drink Puppy Drink' enamel advertising dog bowl, c.14ins across (blue background)



**m202** Spillers Wholemeal Winalot The Dogs Diet enamel advertising bowl c.10.5ins dia'



**m203** Spratt's enamel advertising dog bowl, marked Spratt's Patent Ltd Made In England, no apparent losses c.10.75ins dia'



**m204** Spratt's enamel advertising dog bowl, marked Spratt's Patent Ltd Made In England, minor losses to enamel and slight rust to base, c.10.75ins dia'



**m207** Spratt's pictorial enamel dog bowl featuring a spaniel, 10.5ins dia'



**m205** Spratt's enamel advertising dog bowl, marked Spratt's Patent Ltd Made In England, minor losses to rim of bowl, c.10.75ins dia'



**m208** 'Stamina Dog Foods' enamel advertising bowl



**m206** Spratt's small diameter pictorial enamel dog bowl, possibly for a puppy or a salesman's model, 5ins dia'



**m209** Stamina Liverpool enamel advertising dog bowl c.10.5ins dia'



**m210** Property of Spratts Patent embossed galvanised advertising dog bowl, c.10.5ins dia'



**m213** Wright's and Son's Chocolate Wafers baker's shop counter-top advertising display plinth and dome, c.8ins tall, 8ins dia'



**m211** White Lion Motorways Coaches, Cars, Lorries Tractors etc Available For Hire Wotton-Under-Edge Glos, double-sided enamel advertising sign with hanging flange, 14x10ins



**m214** Mowbray & Co. Ltd. The Brewery Grantham 6 bottle transport case with hinged top, 14.5x13x9.5ins



**m212** Tabletop smoker's companion featuring a cigar cutter, matchbox, sticker and advertising windows, by The Cyconic Advertising Co. c.7ins tall



**m215** Horlicks Delicious Hot or Cold Makes a Snack a Meal pictorial advertising printed tin menu sign, 17.5x12ins

All lots are sold strictly as seen and without warranty, potential purchasers must satisfy themselves as to the true condition of a lot by personal inspection prior to the sale.



**m216** Masons Quality Drinks single-sided enamel advertising door finger plate sign, 10x3ins



**m219** Private Fishing Coventry & District A.A Day Tickets single-sided enamel advertising sign, 18x12ins



**m217** Ogden's Beano Pigtail single-sided tobacco advertising enamel sign, 20x15ins



**m220** Ferry Hotel brass advertising sign, c.12x8ins



**m218** To Be Let Apply to Cobay Brothers Limd Auctioneers & Estate Agents Hythe double-sided enamel advertising sign with hanging flange, Kent interest, 20x16ins



**m221** Jordan's Enamelled Signs, a period catalogue of enamel advertising produced by J.A Jordan & Sons Ltd, Beehive Works Bilston



**m222** Always Insist on Gossages Dry Soap printed tin advertising sign c.7x4.75ins



**m225** Oxford Square W.2 Nos 17 to 31 aluminium London road sign, 32x17.5ins



**m223** The New Dunlop Foot Pump pictorial advertising wooden delivery box, c.17ins long



**m226** Roadfinder Cycle Tyres single-sided enamel advertising sign by Sur Enamel, 24x8ins



**m224** Michelin Bibendum man Bakelite smokers ashtray



**m227** Riley double-sided printed aluminium motoring dealership advertising sign, 27x14.5ins



**m228** Studebaker Service double-sided hanging enamel advertising sign with excellent gloss, 24x20ins

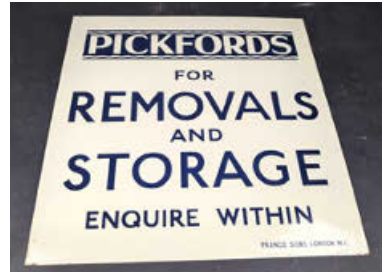


**m231** FoMoCo Genuine Parts Front Suspension and Shock Absorber One Quart Oil can



**m229** John Bull Tyres Made For The Man Who Will Have The Best printed tin door fingerplate advertising sign c.9.5x3.5ins

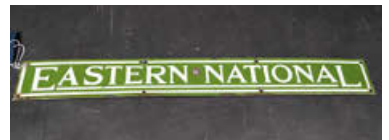
**m232** W.Butler & Co. Limited Hereby Give Notice That This Way is Not Dedicated to The Public, Springfield Brewery Wolverhampton cast iron sign c.14.5x7ins



**m233** Pickfords For Removals and Storage Enquire Within single-sided enamel advertising sign by Franco Signs, c.20x20ins



**m230** EnFo (Ford) Front Suspension and Shock Absorber Fluid One Quart oil can



**m234** Eastern National single-sided enamel advertising sign as previously mounted to timetable cabinet, 21x2.5ins

All lots are sold strictly as seen and without warranty, potential purchasers must satisfy themselves as to the true condition of a lot by personal inspection prior to the sale.



**m235** Buses Stop By Request Queue This Side / Queue Other Side double-sided enamel sign with mounting bracket, 14.5x14ins inc. bracket



**m238** Fare Stage Bus Stop 'Q' Other Side/'Q' This Side double-sided enamel advertising sign 12x11ins



**m236** East Kent Bus Stop Fare Stage double-sided composite sign in frame with hanging brackets 20.5x14ins inc. brackets



**m239** All Buses Stop Here double-sided hanging enamel sign c.19x12ins

**m240** Regent petrol advertising glass cigarette ashtray



**m237** Yorkshire Woollen District Transport Co. Ltd Fare Stage double-sided printed aluminium sign, 16x12ins



**m241** ROP Motorists' Guide to Routes From Sheffield featuring a fold-out map and pictorial representation of the ROP petrol pump globe, loose middle pages



**m242** Tri-ang tin plate model double decker bus displaying route 93 Wimbledon, Morden Putney Bdg Stn, advertising for Pedigree Pram and Tri-Ang Railways, c.23ins long c/w original box



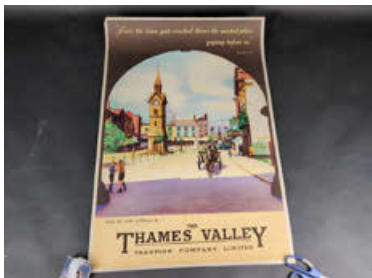
**m245** Enjoy The Riches of Britain by The Thames Valley Traction Company Limited, a full colour bus advertising poster depicting Hampton Court, artwork by Derrick Sayer, 30x20ins



**m243** Bus Stop Request Stage 43 double-sided cast aluminium sign 14x12ins



**m246** Travel to Anywhere in Britain ... By Bus and Coach colour advertising poster with artwork by Studio Seven, 30x20ins



**m244** Enjoy The Riches of Britain by The Thames Valley Traction Company Limited, a full colour advertising poster depicting Aylesbury market town, a horse and cart, bus and motor car, artwork by Norman Money, 30x20ins



**m247** Bristol Group of Bus Companies Get Your Fare Card Here Cut Bus Travelling Costs pictorial advertising poster, c.30x20ins

All lots are sold strictly as seen and without warranty, potential purchasers must satisfy themselves as to the true condition of a lot by personal inspection prior to the sale.



**m248** AEC Crossley Maudslay advertising poster featuring an AEC bus at a seaside resort, artwork by Sherrington, 30x20ins



**m249** AEC Crossley Maudslay colour advertising poster depicting 3 buses leaving a town, artwork by R.Southgate, 30x20ins



**m250** AEC Crossley Maudslay colour advertising poster depicting 3 tour buses parked, artwork by Krogmon, 30x20ins



**m251** National Benzole 3-sided glass petrol pump globe, marked Property Of The National Benzole Co Ltd, some fading and damage to neck



**m252** 5 gallon pyramid top oil can



**m253** Beechwood Table Dainties In Glass Moulds Choice Devonshire Potted Meats, a highly pictorial multi-colour enamel advertising sign, thought to be unique, dating between 1921-1928, 54x27.5ins

*All lots are sold strictly as seen and without warranty, potential purchasers must satisfy themselves as to the true condition of a lot by personal inspection prior to the sale.*



**m254** Stanfield's Superfine Shag single-sided enamel advertising sign, 72x36ins



**m257** Super Russian Motor Oil pictorial can



**m255** Tecalemit wall-mounted workshop brake testing unit, 49x24x10ins



**m258** Garage forecourt 'bomb-shaped' electric tyre compressor, c.1920s



**m256** Romac Workshop Tyre & Tube Repair Outfit tin



**m259** AA Patrolman of The Year bronze presentation figure



**m260** Duckhams 20-50 Motor Oil enamel advertising sign with integrated thermometer, 36x13ins



**m263** Michelin cab-mounted Bibendum man with mounting bracket, illuminated



**m261** Humber Rootes Group dealership showroom wall plaque of plaster construction, c.18ins dia'



**m264** Shell Self-Mix 2-stroke forecourt oil dispenser with trolley wheels



**m262** Pr. Avon Brilliant Boot Polish For Boots and Leggings printed tin pictorial door advertising finger plate signs



**m265** Woodbine Cigarettes single-sided enamel advertising sign, 60x17ins

*All lots are sold strictly as seen and without warranty, potential purchasers must satisfy themselves as to the true condition of a lot by personal inspection prior to the sale.*



**m266** Godwin cabinet petrol pump presented in 'barn-find' original condition with hose and dispenser nozzle



**m267** Dagenite Batteries Topping Up garage forecourt service tank with advertising sign



**m268** Les Leston steering wheel shaped ash tray by Beswick, 7.5ins dia'



**m269** BP Regular milk glass petrol pump globe, minor damage, by Webb's Crystal Glass Co Ltd London



**m270** Castrol retail display stand with a qty oil cans, bottles and grease tins inc. STP, 4ft tall



**m271** Les Leston steering wheel shaped ash tray made for I Rallye Internacional de Vigo 18-24 July 1977, c.7.5ins dia'

*All lots are sold strictly as seen and without warranty, potential purchasers must satisfy themselves as to the true condition of a lot by personal inspection prior to the sale.*



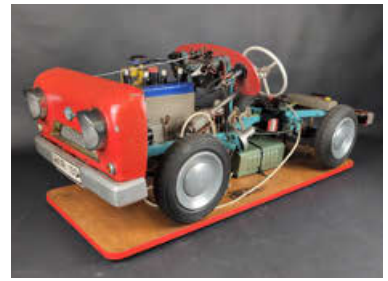
**m272** Humber The Aristocrat of All Bicycles cycling hardboard advertising sign with royal warrant, 60x15ins



**m273** British Leyland Austin acrylic light box front advertising sign, 48x12ins



**m274** Total plastic petrol pump globe



**m275** VVR 100 cutaway demonstration educational model of a car showing inner workings of many mechanical components. This Verkehrs-Verlag Remagen VVR is a full-frame motorized scale model built in Germany in the 1950s and sold as an instructional tool for driving schools. The chassis features a metal frame carrying a 4cylinder engine with a transparent case that allows observation of electrically driven rotating internal components, including a crankshaft, pistons, and a camshaft. A cutaway manual gearbox with an operational shifter and clutch allows selection from three speeds and reverse to transfer power to the rear or all four wheels via a driveshaft, a cutaway differential, and half shafts. Additional features include illuminated simulation spark plugs, a pontoon-style front fascia, leaf-spring and coil-spring suspension, functional drum brakes, a cutaway functional worm-and-sector steering box, and functional lighting. Fitted with a UK 3-pin plug, upon inspection the engine does turn however the transmission will not select a gear. The lights and horn are functional  
Serial No. 924



**m276** 3no. Lucas single-sided advertising signs, Braking, Electrical, Diesel, Foamex-style in aluminium frames, NOS, c.31.5x10ins each



**m277** Castrol Agricastrol 5gallon pyramid top oil can



**m278** Duckhams 5gallon pyramid top oil can



**m279** Pratts High Test Plan of The North Moor, Mountain and Lake District paper advertising map, 20x26ins

**m280** Steering wheel clock, battery powered, 14ins dia'

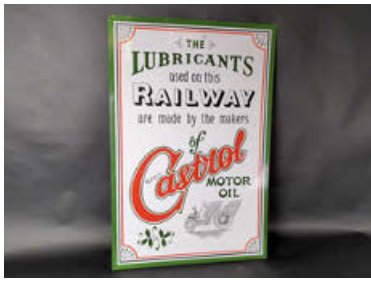


**m281** Rolls-Royce child's pedal car by The Little Pedalers Car Co., British, all metal construction, ladder chassis, treadle pedals, pneumatic tires, wire wheels, sprung rear axle, and electric headlights



**m282** Dunlop acrylic wall clock, battery quartz movement, 35ins dia'

All lots are sold strictly as seen and without warranty, potential purchasers must satisfy themselves as to the true condition of a lot by personal inspection prior to the sale.



**m283** Castrol, The Lubricants Used On This Railway.... retro styled printed aluminium sign, 36x24ins



**m287** Duckhams Motor enamel advertising sign with integrated thermometer, 26x20ins



**m284** Morris fibreglass dealership advertising sign c.55.5x18ins



**m288** International Harvester Parts Dept tractors agricultural illuminated advertising sign 27x15ins, no wiring



**m285** Castrol fibreglass garage advertising sign, NOS with original box, c.36x14ins



**m289** Agent For 'Hurricane' Bicycles The Modern Cycle printed aluminium pictorial advertising sign, 18x15ins



**m286** Austin Rover acrylic light box front advertising sign, 28.5x26.5ins

All lots are sold strictly as seen and without warranty, potential purchasers must satisfy themselves as to the true condition of a lot by personal inspection prior to the sale.



**m290** Lucas double-sided light box wall hanging sign, appearing to be unused, c.27x18.5ins



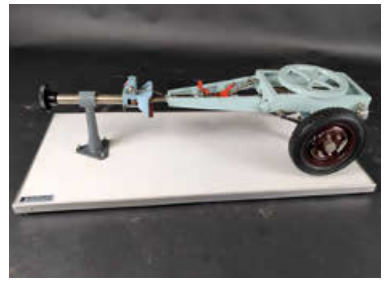
**m291** Isuzu Sales illuminated dealership light box advertising sign, c.37.5x12ins



**m292** Nu-Texa Brake and Clutch Linings Stockist single-sided enamel advertising sign, 25x14ins



**m293** Humber Cycles Agent single-sided enamel advertising sign, 48x16ins



**m294** Werner Degener Hohm trailer demonstration model showing working drawbar, brakes, suspension etc, c.25.5ins total length



**m295** Agency for Norwich Union Insurance Societies acrylic advertising sign, c.19.5x12ins



**m296** You May Telephone From Here double-sided timber sign, 48x10ins



**m297** Black & White Scotch Whiskey terrier dog plaster advertising display c.31ins wide, c.23ins tall



**m301** Lyons Cakes double-sided enamel advertising sign with hanging flange, c.18x15.5ins



**m298** Nelson Tipped Cigarettes acrylic advertising sign, framed, 32x7ins



**m302** Fresh Palethorpes To-Day single-sided enamel advertising sign, marked Imperial Enamel Co, thought to be an older reproduction, 36x15ins



**m299** Wills's Gold Flake Cigarettes circular double-sided enamel advertising sign with hanging hooks, 18ins dia' not inc. hooks



**m303** R.White's Soft Drinks single-sided enamel advertising sign c.24.5x20.5ins



**m300** Mayfair Cigarettes & Drum tobacco card hanging advertising signs c.39ins long each

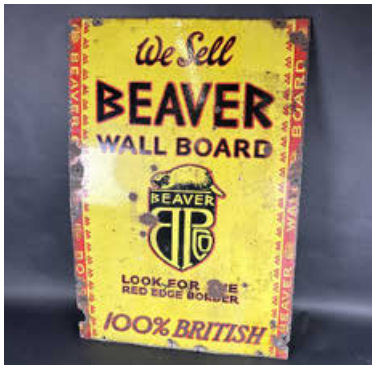
All lots are sold strictly as seen and without warranty, potential purchasers must satisfy themselves as to the true condition of a lot by personal inspection prior to the sale.



**m304** For Your Throat's Sake Smoke Craven A enamel tobacco advertising sign



**m305** Manchester Co-Operative Society enamel advertising sign, 30x18ins



**m306** We Sell Beaver Wall Board enamel advertising sign, 36x24ins



**m307** Brooke Bond Dividend Tea, Spend Wisely Save Wisely single sided enamel advertising sign, 30x20ins



**m308** Wright's Coal Tar Soap single-sided enamel advertising sign marked Stainton & Hume Ltd, BHam, 66x26ins



**m309** Danger Overhead Electrical Line Crane Jib Railway warning sign, with Hull 644020 enamel plaque, 18x12ins

All lots are sold strictly as seen and without warranty, potential purchasers must satisfy themselves as to the true condition of a lot by personal inspection prior to the sale.



**m310** Loch Corrie, A Happy Blend of Old Malt Whisky, Marshall & Elvy Ltd London & Glasgow single sided enamel advertising sign, 14x10ins



**m311** Smoke Richmond Gem Cigarettes Mild, Medium & Full single sided enamel advertising sign, 60x18ins



**m312** Capstan Navy Cut Tobacco & Cigarettes single sided enamel advertising sign, 60x15ins



**m313** Capes Ladies Hairdressers single sided enamel advertising sign, 72x22ins



**m314** Swan Vestas The Smoker's Match printed tin advertising sign with integrated thermometer, 15x3.5ins



**m315** Woodbine The Great Little Cigarette pictorial single sided enamel advertising sign, 60x36ins



**m316** Truman's Eagle Brand Bottled Ales & Stouts single sided enamel advertising sign, 60x40ins



**m317** Depot For Silcock's Food, Poultry and Cattle single sided enamel advertising sign bearing Royal Warrant and marked Patent Enamel Co B'Ham, 54x36ins



**m318** Rawlplug Fixing Devices For Every Purpose pictorial single sided enamel advertising sign, 24x18ins



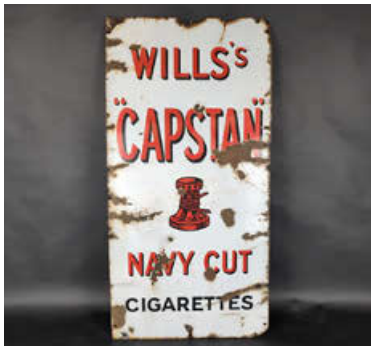
**m319** Spratt's Bird Seeds, marked Spratt's Patent Ltd, London E.C, single sided enamel advertising sign, 30x24ins



**m320** Dale, Forty & Co Pianos enamel advertising sign



**m321** Borwick's Baking Powder The Best For Every Home single-sided enamel advertising sign 36x18ins



**m322** Wills's Capstan Navy Cut Cigarettes enamel advertising sign



**m325** Lennards World Famed Boots & Shoes enamel advertising sign



**m323** Capstan Navy Cut Cigarettes Sold Here enamel advertising sign



**m326** Esso Put a Tiger in Your Tank 2-part hardboard advertising sign c.70ins total length



**m324** Wills's Bulwark Cut Plug Tobacco enamel advertising sign



**m327** Shell Anti-Freeze Penguin hardboard advertising sign c.49.5ins tall

All lots are sold strictly as seen and without warranty, potential purchasers must satisfy themselves as to the true condition of a lot by personal inspection prior to the sale.



**m328** The New Bedfords, a large paper/plyboard freestanding dealership advertising sign for Bedford commercial vehicles depicting a grille with headlights c.43.5x36.5, losses



**m331** Michelin Bibendum man carrying a tyre shield-shaped pictorial enamel sign, dated 1964, 43x34ins, losses



**m329** Wills's Capstan double sided glass advertising sign in hanging metal frame, 30x20ins



**m332** Sturme-Archer double-sided pictorial enamel advertising sign with wall hanging flange 21x13ins



**m330** 1980's Walls Ice Cream pictorial printed tin swinging freestanding advertising sign



**m333** Motor BP Spirit Union flag enamel advertising sign, 6x4ft, losses, recently found in Burwell, Cambs and thought to be from the bus depot previously off The Causeway



**m334** BP 14 enamel advertising sign, losses, recently found in Burwell, Cambs and thought to be from the bus depot previously off The Causeway



**m335** Golden Fleece garage freestanding oil dispenser pump complete with pictorial sheep decals and level indicator, well-restored



**m336** Bedford Ales single-sided enamel advertising sign, possibly ex-Charles Wells Brewery, 7ft long x 15ins tall



**m337** John Player Special wall mounting double-sided acrylic advertising sign c/w bracket, c.26x14.5ins overall



**m338** John Bull Long Service Tyre enamel advertising sign of pillow form, 36x12ins



**m339** Rolex 240v illuminated retail advertising sign c.7.5x5in



**m340** Simplex of Cambridge single-sided enamel advertising sign 14.5x6ins



**m341** Spratts Meat Fibrine Dog Cakes Feed The Canine World enamel advertising sign, 30x20ins



**m344** Visit The Market Inn and Enjoy Friary-Meux Ales and Stouts single-sided painted wooden pub brewery advertising sign



**m342** Champion spark plug shaped printed aluminium advertising sign, c.23.5x7.5ins



**m345** Sunbeam acrylic fronted illuminated light box dealership advertising sign c.1950s, 240v, 36x14ins



**m343** Esso Motor Oil Petrol tin plate clockwork fuel tanker lorry model, c.11ins long



**m346** Les Routiers double-sided printed tin hanging advertising sign, 40x40cm



**m347** Agence Riva-Sport 'Le monde dans sa roue' (The world in it's wheel) pictorial embossed double-sided cycling lithograph advertising sign, 49x34cm



**m350** Kervoline L'Huile Oui S'Impose Pour Autos Par Ses Qualites French language double-sided enamel advertising sign, 65x39cm



**m348** Gazo Motoeur La Petroleenne Essence Tourisme embossed printed tin French language motoring advertising sign, 25x15ins



**m351** Aero-Club De France 1957 single-sided enamel advertising sign marked Email Laborde, 16x16ins



**m349** First Oil Huiles pour Moteurs pictorial single-sided motoring enamel advertising sign, marked Emaillerie Alsacienne Strasbourg, c.19x12ins



**m352** Automobile Et Sportive Association Maison Recommandee Membre De L'A.A.S single-sided French language enamel advertising sign, 20.5x11.5ins



**m353** Targa Florio 1929, a framed and glazed print featuring a Bugatti racing car during the famous race in Sicily, Italy, 26.5x20ins



**m354** Bugatti La Royale, a framed and glazed print, 17.5x14ins



**m355** Motoring lightbulb 7 drawer display cabinet containing various lamp bulbs inc. Lucas, Lumax etc, 23.5x17.5x14ins



**m356** Safety First Help To Keep These Works Safe and Clean single-sided enamel sign



**m357** One Way Street aluminium road sign, 36x12ins



**m358** 30/National Speed Limit circular cast aluminium road sign with some reflectors, marked Needham Stock Fort, 21.5x18ins



**m359** To Car Park cast aluminium road sign marked Royal Label Factory c.21x21ins



**m360** P Centre Of Road parking road sign in cast aluminium, 25x21ins



**m363** Stand For 2 Taxis aluminium road sign, 12x9ins



**m361** Dog Owners It Is An Offence To Allow a Dog On This Road Unless Held on a Lead cast aluminium road sign c.8.5x8.5ins



**m364** No Waiting 8am-8pm aluminium road sign, 20ins dia'



**m362** P parking cast aluminium road sign marked Royal Label Factory 21x21ins



**m365** No Cycling circular aluminium road sign, 18ins dia', restored



**m366** Raleigh All Steel Bicycle, a pictorial single-sided enamel advertising sign, reproduction, 90x60cm



**m367** British Leyland Morris single-sided 240v illuminated dealership advertising sign, 48x14ins



**m368** Mobiloil Pegasus pictorial shield shaped enamel advertising sign, 12x12ins



**m369** Garage Issued by the Daimler Motor Co (1904) Ltd double-sided hanging enamel advertising sign, marked Wildman & Meguyer Ltd, 18x10ins

**m370** BSA logo single-sided hardboard advertising sign, c.11x11ins



**m371** Road Works single-sided glass warning sign with brass frame, c.12.5x10ins



**m372** Motor BP Spirit double-sided enamel advertising sign with hanging flange, some restoration, 24x16ins



**m373** Ford Cosworth Dealership single-sided hand-painted composite advertising sign, c.23x23ins



**m374** G.E.C Electric Light Accessories and Pirelli C.M.A Wires & Cables Sold Here double-sided pictorial enamel advertising sign, 22x15ins



**m375** The Motor Schools Association of Great Britain Registered School enamel advertising sign, 21x13ins

**m376** Aladdin Pink Delivered Home paraffin single-sided hardboard advertising chalkboard, 23.5x17.5ins



**m377** News of The World single-sided enamel advertising sign 20x5ins



**m378** Gossages' Dry Soap/Gossages' Magical Free Lathering Soap double-sided enamel advertising sign with hanging flange, 16.5x9ins



**m379** Ever Ready Batteries For Longer Life! Double-sided illuminated plastic advertising sign, working, cracked one side



**m380** Abdullah cigarettes shelf edge 240v illuminated sign, no bulb, untested



**m381** Duckhams Motor Oil forecourt rack and 3no. Duckhams cans



**m382** RAC emergency fibreglass telephone box c.1980s

**m383** Walls Ice Cream metal advertising box

**m384** Vintage vending machine spares to inc. Wrigleys vending machine, missing front cover

**m385** Tokheim enamel petrol pump face

**m386** Qty Mobil service data charts

**m387** 1980s/90s adult motoring calendars to include Unipart etc

**m388** Esso Plue paraffin dispenser drum, t/w foot pump and pr. Anglo American oil Co parowax boxes



m389 AI Light cigarettes advertising sign



m390 Kensitas Cigarette advertising sign



m391 KitKat wall-mounted vending machine c.1970s



m392 Champion spark plug holder rack



m393 Ford Sales and Service advertising sign

m394 Wakefield Castrol Motor Oil enamel sign, extensive amateur restoration, flange flattened



**m395** Duckhams bottle holder advertising rack



**m396** Pursan oil can, French



**m397** Red Bell Tobacco advertising sign



**m398** Ford advertising bag, gifted to staff members at a Staffordshire dealership



**m399** Sinclair A Bike – Clive Sinclair's folding bicycle



**m400** Pratts enamel cap badge

**m401** 3no. Shell & Esso garage car mats

**m402** Shell-Mex & BP garage forecourt open / closed sign

**m403** Terry's trouser clips point-of-sale retail display

**m404** Vikas hacksaw advertising sign



**m405** Senior Service tobacco advertising sign



**m406** BP. Motor Oil advertising sign, hardboard



**m407** Midland Counties enamel sign



**m408** Twinlock & Outdoor Requirements, a pr. hardboard advertising signs

All lots are sold strictly as seen and without warranty, potential purchasers must satisfy themselves as to the true condition of a lot by personal inspection prior to the sale.



**m409** Coca-Cola and Pepsi,  
hardboard advertising signs



**m410** Pr. advertising signs from South  
America



**m411** AA campsite double-sided  
pictorial enamel advertising sign,  
27x16ins



**m412** AA Hotel single-sided shield-  
shaped enamel advertising sign,  
c.31x22ins



**m413** St. Bruno Flake Rough Cut  
Tobacco pictorial single-sided  
enamel advertising sign, 36x24ins



**m414** Mitchell's Tam O'Shanter  
Tobacco enamel advertising sign



**m415** Mitchell's XXX Bogie enamel  
advertising sign



**m416** That's Shell.. That Was... An unusual freestanding electric clockwork advertising display sign, incomplete, mechanism removed and mans body will need re-gluing to the display, made by Kennedy Displays Ltd, 24ins tall, 18ins wide



**m419** Texaco, a Buddy L pressed steel tin plate model articulated fuel tanker lorry, c.24ins long



**m417** Shell-Mex model petrol station building



**m420** Mobiloil Delvac 5gallon pyramid top oil can with cap



**m421** Lister Blackstone wooden advertising sign



**m418** Good qty Shell/BP swing tags and Running In decals



**m422** Aladdin Pink paraffin can t/w Valor blue can

All lots are sold strictly as seen and without warranty, potential purchasers must satisfy themselves as to the true condition of a lot by personal inspection prior to the sale.



**m423** W.C.C Caution Road Flooded warning sign, raised lettering with reflective beads, with hanging frame, marked Royal Label Factory Stratford on Avon, 29x22ins



**m424** Petroleum Spirit Store Highly Inflammable Caution single-sided enamel warning sign, losses, 24x24ins

**m425** Black Cat Cigarettes single-sided enamel advertising sign, 18x12ins, reproduction

**m426** Shell Motor Oil pecten decal

**m427** 2no. Esso decals

**m428** Agricastrol Tractor Oil water transfer decal

**m429** Castrol 75th anniversary 1899-1974 decal



**m430** Castrol Industrial Oils decal

**m431** Shell Aviation Gasoline Durochrome decal, dated 1960

**m432** Agricastrol Tractor Oil decal (pink)



**m433** Pratts Motor Spirit double sided enamel advertising sign 21x15ins



**m434** Dunlop Cycle Tyres double-sided enamel advertising sign 27x14ins



**m435** Hull & Willis double-sided enamel advertising sign, 20x16ins



**m436** Ingersoll Watches & Clocks double-sided enamel advertising sign, 28x12ins



**m437** Gillons Scotch Whisky enamel advertising sign, 36x18ins

**m438** Boughton Post Office enamel advertising sign, 48x8ins

**m439** Tuborg Gold bar mounted beer tap



**m440** Qty advertising and promotional clocks to inc. Twix, Tetley Tea, Caffreys Irish Ale



**m441** Qty advertising and promotional clocks to inc. Weetabix, Ginsters, Tetleys, Simpsons etc

**m442** Post Office wall mounted clock t/w misc other advertising promotional clocks



**m443** John Bull Tyres A Great British Tyre with a Great British Name single-sided printed tin advertising sign, 36x12ins



**m444** AC Filters Oil Air Fuel, Spark Plugs, Stats & Caps wall-mounted display, 42x30ins

All lots are sold strictly as seen and without warranty, potential purchasers must satisfy themselves as to the true condition of a lot by personal inspection prior to the sale.



**m445** Tabs The Favorite Cigarette One Penny Per Packet single-sided enamel advertising sign by Imperial Enamel, 20x15ins



**m446** Bamboo Brand IPP Co. Ld Papers for Quality India Paper Pulp Co Ld Calcutta single-sided enamel advertising sign, 30x15ins



**m447** Ogden's Robin Cigarettes single-sided pictorial enamel advertising sign, 30x18ins



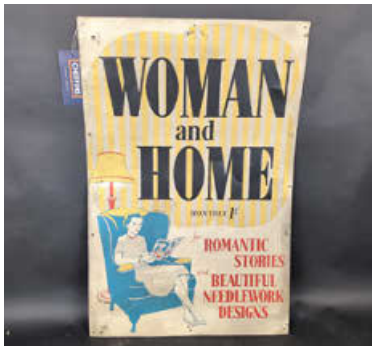
**m448** White May and Royal Standard BP Lamp Oils double-sided enamel advertising sign, flange removed, 18x12ins



**m449** Esso Elephant Kerosene single-sided pictorial enamel advertising sign, reproduction, 24x12ins



**m450** Stephens' Inks/Picture Post Cards double-sided enamel advertising sign with hanging flange by J.A Jordan & Sons, 18x10ins



**m451** Woman & Home Monthly For Romantic Stories and Beautiful Needlework Designs single-sided pictorial printed aluminium advertising sign, c.30x19.5ins



**m452** Coca-Cola copper single-sided advertising sign, 21.5x13ins



**m453** Wills's RCV Rich Cut Virginia Tobacco 4d an Ounce, single-sided enamel advertising sign, losses, 30x18ins



**m454** Notice This Land Is The Property of The West Ham Corporation.... embossed aluminium warning sign, c.28.5x17.5ins



**m455** Lyons Ink pictorial single-sided enamel advertising sign by Imperial Enamel Co. Ltd, losses, 36x12ins



**m456** Smoke Wills's Gold Flake Cigarettes 10 for 3d single-sided enamel advertising sign, losses, 42x30ins

All lots are sold strictly as seen and without warranty, potential purchasers must satisfy themselves as to the true condition of a lot by personal inspection prior to the sale.



**m457** The Birmingham Mail Each Evening single-sided enamel advertising sign c.19x5.5ins



**m458** Players Navy Cut Tobacco/ Cigarettes double-sided enamel advertising sign with hanging bracket, 24x18ins (sign only)



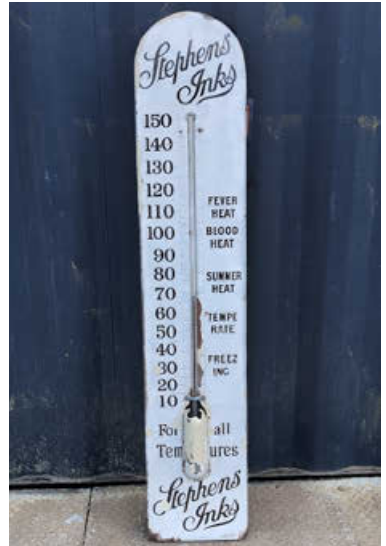
**m459** Kent With The Micronite Filter pictorial cigarette printed tin advertising sign 11.5x11ins



**m460** Telegraph Office pictorial directional single-sided enamel sign by Chromo, 31x6ins



**m461** Say McVities! printed tin highly pictorial advertising sign, c.19x14.5ins



**m462** Stephens' Inks For All Temperatures, a large enamel advertising sign with integrated thermometer, losses, some restoration, 60x12ins



**m463** Lyons Tea Sold Here double-sided enamel advertising sign with hanging flange 18x12ins



**m466** Smoke and Enjoy Blue Bell Tobacco Cool and Mellow single-sided enamel advertising sign, 40x30ins



**m464** The Sensible Man Knows What's Best and Insists Upon It Crow Bar Dark Brown Bar Tobacco Worth Waiting For single-sided pictorial enamel advertising sign, losses, 54x36ins



**m467** Do Not Touch Electrical Device – 2no. Polish language pictorial enamel warning signs, minor restoration, largest c.12x8ins



**m465** Smoke Richmond Gem Cigarettes Mild, Medium & Full Strengths single-sided enamel advertising sign, 36x24ins



**m468** Concordia Hannover pictorial single-sided enamel advertising sign marked C.Robert Dold Offenbung, convex, c.8x5.5ins

All lots are sold strictly as seen and without warranty, potential purchasers must satisfy themselves as to the true condition of a lot by personal inspection prior to the sale.



**m469** John Bull, Triumphant Council:  
- M'Lud, it is so, it's in John Bull,  
a highly pictorial single-sided  
enamel advertising sign, losses,  
28x20ins



**m472** Womens World Happy Birthday -  
Lovely Gifts for Readers Brightest  
and Best Weekly single-sided  
printed aluminium advertising  
sign, c.30x19.5ins



**m470** Lyons Coffee and Chicory Extract  
single-sided enamel advertising  
sign, minor restorations, 35x12ins



**m473** You May Telephone From Here  
pictorial double-sided enamel  
advertising sign with wall hanging  
bracket, 19x19ins (sign only)



**m471** Ask For Nut Brown Tobacco  
single-sided enamel advertising  
sign 48x18ins



**m474** Hovis Trade Mark Bread single-  
sided enamel advertising sign, by  
Falkirk Iron Co. 48x30ins



**m475** Wills's Gold Flake The World's Most Famous Cigarette single-sided enamel advertising sign, losses, 36x18ins



**m476** Ask For Nut Brown Tobacco single-sided enamel advertising sign, c.40x30ins



**m477** Wills's Gold Flake Cigarettes single-sided vertical enamel advertising sign, 36x12ins



**m478** Ask For Nut Brown Tobacco single-sided enamel advertising sign 30x20ins



**m479** Stephens' Inks single-sided enamel advertising sign, 44x10.5ins



**m480** Volvolutum The Worlds Best Soap single-sided enamel advertising sign, losses, 48x15ins



**m481** Taylor Walker Est London 1730 brewery pictorial enamel advertising pub sign, c.21x10.5

All lots are sold strictly as seen and without warranty, potential purchasers must satisfy themselves as to the true condition of a lot by personal inspection prior to the sale.



**m482** Player's Digger Tobacco/Player's Weights Cigarettes canvas advertising banner, 45.5x30ins



**m485** Michelin Mr Bibendum running pictorial double-sided enamel advertising sign, c.31.5x31.5ins



**m483** 4no. tobacco and other domestic pictorial advertising tins



**m486** Champion Dependable Spark Plug Service double-sided printed aluminium advertising sign 18x12ins



**m484** Open/Closed Agency 2 Stroke Toilets freestanding double-sided garage sign, c.47x31ins

**m487** Rolex pictorial illuminated light box advertising sign, reproduction, 49x13.5ins



**m488** Ferodo Brake Testing Service double-sided enamel advertising sign



**m489** Old Calabar Dog, Puppy, Game & Poultry Foods single-sided enamel advertising sign, c.60x40ins



**m490** B.O.C Motor Spirit Oils & Greases painted tin advertising sign, 64x28ins



**m491** Duckhams Oils wall hanging sign with thermometer, modern reproduction, c.34x12ins

**m492** OXO Cube circular single-sided enamel advertising sign, reproduction, 36ins dia'

**m493** AA Garage single-sided shield shaped enamel sign, reproduction, 15.5x11.5ins



**m494** Ford V8 Genuine Parts circular single-sided enamel advertising sign, reproduction 30ins dia'



**m495** Texaco circular single-sided enamel advertising sign, reproduction, 30ins dia'

**m496** Ferrari, a double-sided painted wall hanging plastic box sign, reproduction, c.31x19ins

**m497** Golden Shell Motor Oil shaped single-sided enamel advertising sign, reproduction, c.24x18ins

**m498** Sharpness New Docks & Gloucester & Birmingham Navign Compy Notice This Bridge is Insufficient To Carry Weights Beyond The Ordinary Traffic Of The District cast sign c.27x17ins

All lots are sold strictly as seen and without warranty, potential purchasers must satisfy themselves as to the true condition of a lot by personal inspection prior to the sale.

- m499** Private Property Trespassing Forbidden Under Penalty of Law cast sign 17.5x10.5ins



- m500** LNER Any Person Who Omits To Shut and Fasten This Gate Liable To A Penalty Not Exceeding Forty Shillings cast warning sign, c.40x3.5ins



- m501** Great Western Railway Notice Is Hereby Given In Pursuance of The Provisions of Section 65 of The Great Western Railway (Additional Powers) Act, 1924, That This is a Private Road

- m502** Great Western Railway Notice Trespassing cast warning sign



- m503** Essolube t/w Regent Havoline glass oil bottles



- m504** Wall's Ice Cream Sold Here enamel advertising sign, c.12x10ins



- m505** Regent 28 pounds grease can



- m506** Regent polycarbonate petrol pump sign c.27.5x8ins

- m507** London Underground This Way To Air Raid Shelter single-sided enamel sign, reproduction

- m508** Shell Motor Spirit enamel advertising sign, reproduction

- m509** Ford Escort RS 1600i illuminated light box advertising sign, reproduction

**End of Sale**

*All lots are sold strictly as seen and without warranty, potential purchasers must satisfy themselves as to the true condition of a lot by personal inspection prior to the sale.*

# Notes

# Notes

# CONDITIONS OF BUSINESS

## INFORMATION FOR BUYERS AT AUCTIONS

### 1. Introduction

The following notes are intended to assist bidders and buyers, particularly those who are inexperienced or new to our saleground and auctions. All of our auctions are governed by our Conditions of Business incorporating the Information for Buyers, Terms of Consignment (primarily applicable to Sellers), the Conditions of Sale (primarily applicable to bidders and buyers) and any notices that are displayed at our sale sites, offices or announced by the auctioneer at the auction. Our Conditions of Business are available for inspection at our sale sites, offices, in our printed catalogues and on our website. Our staff will be happy to help you if there is anything in our Conditions of Business that you do not fully understand.

2. Please refer to Clause 1 of the Terms of Consignment if you are unsure about the meaning of any defined term.

3. The Auctioneers may supplement or supersede these Conditions in whole or in part with Special Conditions applicable to a specific sale or Lot which may be announced at the time of the sale or will be included in the foreword of the sale catalogue. No employee or agent of the Auctioneers has any authority to vary these conditions.

Please make sure that you read our Conditions of Sale set out in the catalogue or on our website carefully before bidding in the auction. All bidders will be obliged to comply with our Conditions of Business, incorporating the Conditions of Sale.

### 4. Agency

As auctioneers we act on behalf of the Seller, whose identity, for reasons of confidentiality is not normally disclosed. If you buy at auction, the contract for your purchase of the Goods is with the Seller, not with us as auctioneer.

### 5. Pre-Sale Estimates

Where Pre-sale estimates are given, they are designed to help you gauge what sort of sum might be involved for the purchase of a particular Lot. The actual Hammer Price realised at auction may be higher or lower than the pre-sale estimate. The lower estimate may represent the Reserve Price (the minimum price for which a Lot may be sold) which we have agreed with the seller. Pre-sale estimates do not include the Buyer's Premium or VAT (where chargeable). Pre-sale estimates may change and should not be thought of as the Lots value or predicted sale price. Pre-sale estimates are prepared some time before the auction and maybe altered by a notice at the sale site or announcement by the auctioneer before the auction of the Lot; they represent a matter of opinion and are not definitive. It is advisable that you contact us nearer the time of the auction for any updates or revisions to pre-sale estimates.

### 6. Buyer's Premium

The Conditions of Sale oblige you to pay a buyer's premium on the Hammer Price of each Lot purchased and will consist of an amount calculated by applying the bands and rates detailed in **Appendix I** as these can vary depending on the type of auction.

Please note, VAT at the standard rate will be charged on all charges, except those detailed in Clause 7.2.

### 7. VAT

VAT rules are complicated, and you should take specialist advice if you are uncertain about their effect. Prospective buyers should check with the Auctioneers before bidding if they are unsure into which category a Lot falls.

7.1 VAT at the standard UK rate (presently 20%) will be added to the Hammer Price on all Lots (with the exception of On Site and Vintage sales where relevant Lots will be identified in the Auctioneers catalogue with a 'V'), unless the Lot is sold under the Margin Scheme (including second hand vehicles) when VAT will not be added separately to the Hammer Price. Under the Margin Scheme VAT will be charged on the Buyer's Premium but will be shown as an inclusive amount which cannot be reclaimed as Input Tax. The Auctioneers may choose, entirely at their discretion, to use the Margin Scheme in any auction for eligible items. Lots included under this scheme will be marked in the catalogue with an 'm'. The only exception will be in the case of 'zero-rated' or 'exempt' items which be marked in the catalogue with either a 'z' or 'e' and will not attract VAT. Prospective buyers should check with the Auctioneers before bidding if they are unsure into which category any Lot falls. Full details of the Margin Scheme can be found on the HMRC website [www.hmrc.gov.uk](http://www.hmrc.gov.uk) notices 718 and 718/1.

7.2 Buyers from outside the UK that are within the EU Community may be required to pay a VAT deposit equivalent to the UK standard rate of VAT. This amount of VAT deposit will be refunded to the buyer upon receipt of satisfactory evidence of export within the required time limit. Details of the evidence required, and the time limits are available from the Auctioneers' office and will include original copies of the Export Lodgement Advice and satisfactory Bill of Lading or Certificate of Shipment, clearly identifying the goods. Failure to provide these documents within the relevant time limit will mean that the VAT deposit will be paid directly to HMRC as VAT. Buyers that have not paid a VAT deposit and who have failed to provide satisfactory evidence of export within the required time limit will be invoiced directly by Cheffins for the VAT due on the Lot/s bought.

- 7.3 All other buyers from outside the UK and the EU will be required to pay a VAT deposit equivalent to the UK standard rate of VAT. This amount of VAT deposit will be refunded to the buyer upon receipt of satisfactory evidence of export within the required time limit. Details of the evidence required, and the time limits are available from the Auctioneers' office and will include original copies of the Export Lodgement Advice and satisfactory Bill of Lading or Certificate of Shipment, clearly identifying the goods. Failure to provide these documents within the relevant time limit will mean that the VAT deposit will be paid directly to HMRC as VAT.

## **8. Description and Condition of Lots**

- 8.1 As we act as agents for the Seller, we are primarily dependent on information provided by the Seller about their Goods. Any statement, written or verbal, made by us in respect of any Lot as to authorship, genuineness, origin, date, age, provenance, conditions or estimated selling price, including condition reports that may be provided at your request, is a statement of opinion honestly held by us and is not a statement of fact. Weights and measures given in the catalogue are approximate. You will have ample opportunity to inspect the Goods at pre-sale viewings and it is recommended that you inspect and investigate Lots that you might wish to bid for. Accordingly, we will accept bids from you on the basis that you (or your advisors) have fully inspected the Lot prior to bidding and have satisfied yourselves prior to bidding in relation to the condition and accuracy of the description of the Lot. The nature of the Lots sold at auction is such that they will rarely be in perfect condition and are likely, due to their nature and their age, to show signs of wear and tear, damage, or other imperfections, refurbishment or repair. Any reference to condition by Cheffins will not amount to a full description of condition. Photographs included in Cheffins sale catalogues or on the website are not representative of any Lot. We draw your attention to the exclusion of liability for the condition of Lots contained in the Conditions of Sale. Neither the Seller nor we, as the auctioneers, accept any responsibility for the condition of any Lot. In certain specified circumstances, Lots that are misdescribed because they are deliberate forgeries or reproductions may be returned by you and repayment made by the Seller. There is a 21 Working Day time limit for you to return a Lot on this basis (please see the Terms of Consignment for the definition of 'Deliberate Forgery').
- 8.2 If you buy Goods with electrical components and intend to use them, you must ask a qualified electrician to check them for compliance with safety regulations before you use them.
- 8.3 Goods in some sales, (including but not limited to Vintage and On-Site Sales) are sold for their historical and/or decorative attributes and for collection and display only. Such Goods are not intended for use and are not guaranteed to be in working order.
- 8.4 Certain machines could contain hazardous substances such as blue and white asbestos, dangerous chemicals and other hazardous substances which, if not handled correctly and disposed of correctly, could be in breach of the Health & Safety at Work Act 1974, Control of Substances Hazardous to Health Regulations 1988 (COSHH) and any other relevant legislation. The buyer undertakes to handle and dispose of correctly, any toxic chemicals and dangerous substances and to indemnify the Auctioneers against any failure to observe these undertakings.

## **9. Bidding**

Bidders will be required to register with us and satisfy our 'Know Your Customer' checks before bidding, this may include providing photographic proof of identity and / or proof of address. Please note that we may refuse to register you if you do not provide us with all the information and documentation that we ask for, this includes information required in order to satisfy our 'Know Your Customer' checks and our obligations under the Proceeds of Crime Act 2002, under sanctions legislation and any other related legislation.

**Lots can only be invoiced to the name and address on the registration form and cannot be transferred to another name and address. Any amendments to invoices will be made at the Auctioneers discretion.**

There are several alternatives to bidding in person at the sale site at the time of the auction.

### **Online Bidding & Bidding Platforms**

Bidders can register to bid online through Cheffins online bidding platform Auctionmarts, <https://www.cheffins.co.uk/machinery-vintage-auctions.htm>, subject where applicable to providing the information required above. Bidders registering in this way will not incur additional charges.

From time to time, Cheffins may use other independent online bidding platforms or services, therefore bidders using these methods should note that the platform may impose an additional fee or charge, which will be added to the total amount payable in the event your bid is successful. Please refer to the terms and conditions on the relevant independent bidding platform for rates or the Important Information applicable to each auction on the Cheffins website.

### **Commission Bids**

Commission bids may be left with the Auctioneers, indicating the maximum amount you wish to bid (excluding VAT, Buyers Premium and any other charges that may apply). Subject to the Reserve price of the Lot and any other bids received, the sale may be concluded for less than the maximum bid. The bidder will not have any claim against the Auctioneers or their employees if for any reason the commission bid is not executed.

If two bidders submit identical bids, the earliest bid will take precedence. The Auctioneers reserve the right to refuse any bid in any form entirely at their discretion. The Auctioneers decision is final.

### **Telephone Bids**

Please enquire in advance about our arrangements for telephone bids as there is a limited capacity to accommodate this method of bidding. Please note there is a minimum of 24 hours' notice required, and availability of this service cannot be guaranteed.

## 10. Methods of Payment

Payment is due immediately after the auction. We no longer accept cash or credit cards. We accept the following methods of payment:

**Bank Transfer** – direct to our bankers, Barclays Bank, Leicester, LE87 2BB.

Name: Cheffins Auction 1

Sort Code: 20-17-68

Account Number: 50237698

IBAN: GB43BARC20176850237698

Swift Code: BARCGB22

Please quote your buyers name and/or invoice number as reference.

**Cheques** – cheques are accepted entirely at the Auctioneers discretion and any cheques tendered will need to be cleared before removal of the Lot is permitted.

**Debit Cards** – payment can be made in person or over the telephone.

Sold Lots may only be released to you on receipt of payment in full and cleared funds of the invoice total and, where relevant, satisfactory completion of our Know Your Customer checks as outlined in Clause 9 and compliance with Cheffins Conditions of Sale.

## 11. Export of Goods

Any Lot purchased at auction may be subject to export restrictions or may require a licence for export out of the United Kingdom, for example depending on the age and value of the Lot or if the Lot contains organic or endangered materials that are restricted from export. (Please refer to Clause 8.4 above). The buyer is responsible for obtaining any licences which may be required (including any licence that may be required for import on to the destination country). The delay or denial of any such licence will not be grounds for the buyer to cancel any purchase. At the buyer's request, Cheffins can assist in the application for the export of goods outside of the UK.

## 12. Collection and Storage

Please note that all Lots must be paid for and collected by you promptly following the auction and in any event within 14 Working Days following the sale or as stated within the special conditions of sale in the catalogue and / or on the website. Lots may not be released until payment (including Buyer's Premium and VAT where applicable) has been received by the Auctioneers in full and cleared funds and, where relevant, satisfactory completion of the checks outlined in Clause 9. Any delay or failure to collect within the specified timeframe may involve you having to pay storage charges. At the buyers request and at the Auctioneers discretion, the Auctioneers may assist in arranging postage, shipment or haulage of Lots, subject to size and weight, otherwise, collection will be the sole responsibility of the Buyer. Buyers may be required to produce proof of identity on collection of the Lot. Any costs incurred by the Auctioneers in arranging the above will be re-charged accordingly. Cheffins accept no liability for loss or damage to any Lot that is posted or shipped.

If you arrange for a third party to collect a Lot on your behalf, we may require confirmation from you of the third party's authority to collect the Lot in advance of releasing it. The Auctioneers accept no liability for loss or damage to any Lot once it has been collected. Any Lot which, without the express written consent of the Auctioneers, has not been collected within six months from the day on which it was last sold, or last offered for sale, will deem to have been abandoned and the Auctioneers will be entitled to dispose of such abandoned Lot(s) at their unfettered discretion and any monies arising from such disposal(s) may be retained by the Auctioneers.

Lots purchased at Cheffins on-site sale venues will be subject to special collection / clearance terms which will be published in the appropriate auction catalogue.

## 13. Inspection of Goods

All Lots are sold 'as seen' with all faults and imperfections and errors of description. Buyers should satisfy themselves prior to the sale of the Lots as to the condition of each Lot and should exercise and rely on their own judgment as to whether the Lot accords to its description. Neither the Auctioneers, their staff or agents are responsible for errors of description or for the genuineness or authenticity of any Lot. No warranty is given by the Auctioneers, their staff or agents or by any Seller to any Buyer in respect of any Lot and any express or implied conditions or warranties are excluded to the fullest extent permitted by law.

## 14. Compliance with Road Traffic Acts, the Health and Safety at Work Act and all other Acts and Regulations applicable to Farm Safety

14.1 The buyer of any vehicle or trailer is responsible for complying with all legal requirements as to the construction and use of such vehicle or trailer and for obtaining all certificates, permits or other authorisation necessary before such vehicle or trailer can be used on the road.

14.2 The buyer of any Lot is responsible for complying with all legal requirements regarding the safe use of items purchased at a sale and shall ensure compliance with all relevant legislation relating to the safe use of any item.

## 15. Auctioneers Right to Annul Sales

In the event of any dispute or refusal to pay or of any non-payment on the part of the Buyer, the Auctioneers may, entirely at their discretion, annul and cancel the sales of such Lot or Lots.

# Thinking of Selling?

Please Contact



**Tom Godsmark** ANAVA

Director

Email: [tom.godsmark@cheffins.co.uk](mailto:tom.godsmark@cheffins.co.uk)

Mobile: 07538 376363



**Ted Shepherd**

Associate

Email: [ted.shepherd@cheffins.co.uk](mailto:ted.shepherd@cheffins.co.uk)

Mobile: 07775 866166

**CHEFFINS**

T 01353 777767 | [cheffins.co.uk](http://cheffins.co.uk)

**CHEFFINS**

Sales and valuations undertaken nationwide. Call 01353 777767 or email [vintage@cheffins.co.uk](mailto:vintage@cheffins.co.uk)

[www.cheffins.co.uk](http://www.cheffins.co.uk)



**CHEFFINS**

200 YEAR ANNIVERSARY